

Windows Server 2016 Datacenter ▲

Microsoft

Windows Server

2016 Datacenter

Windows Server 2016 Datacenter edition is ideal for highly virtualized and software-defined datacenter environments

Kies een taal:

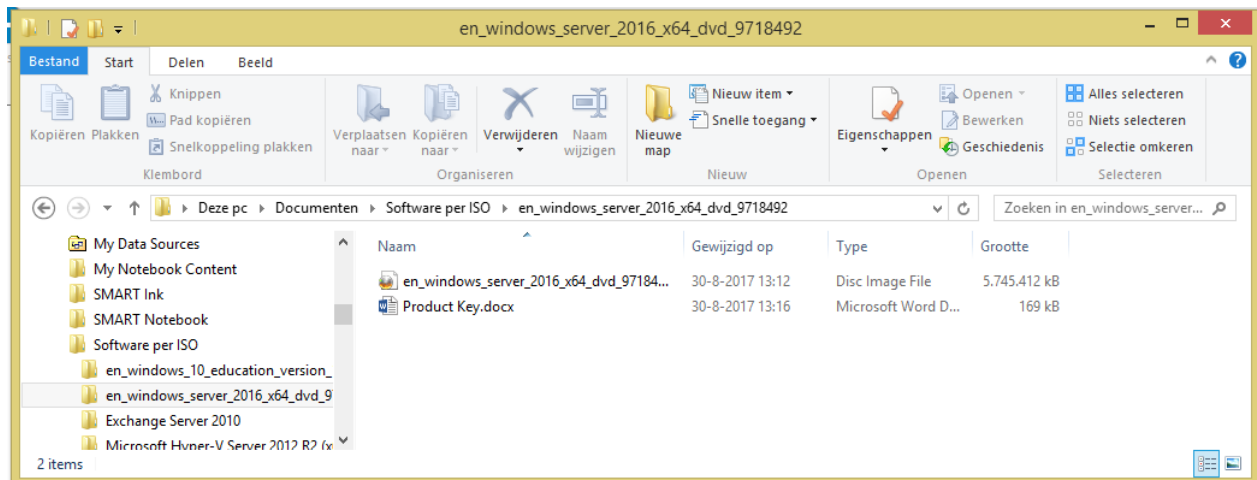
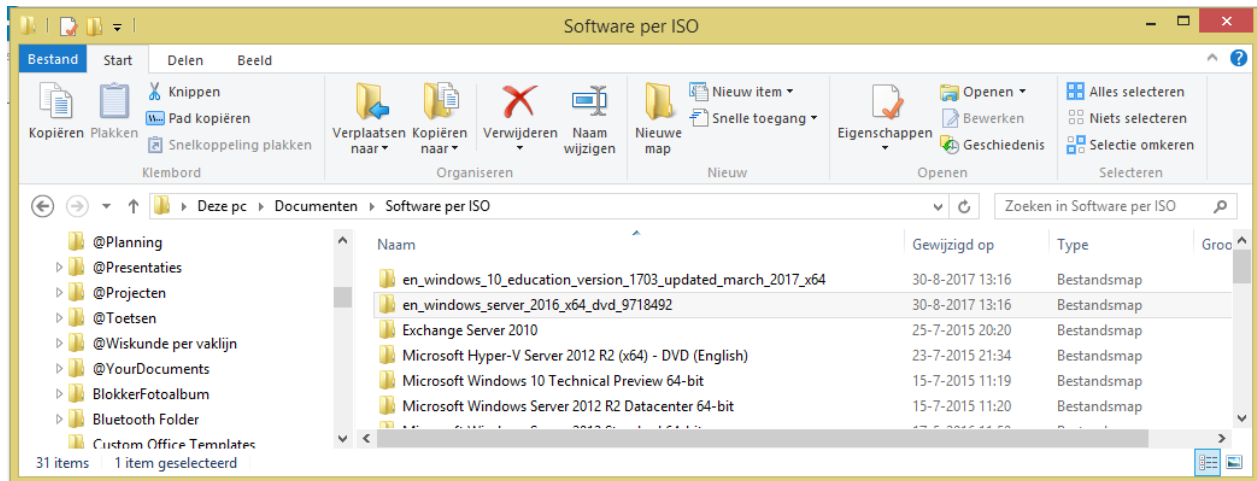
Engels

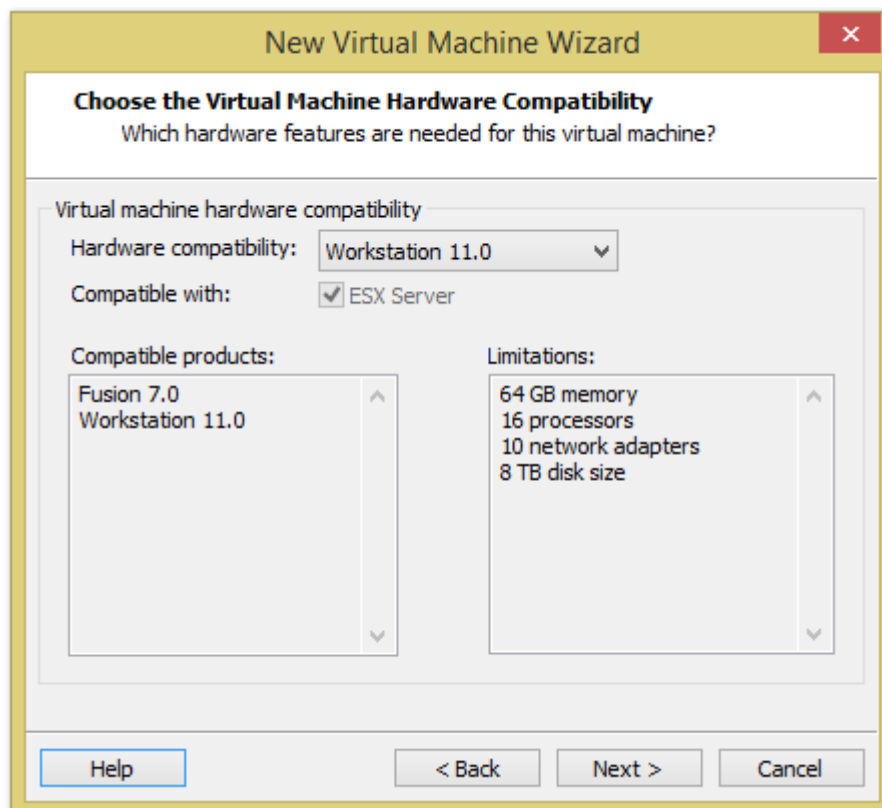
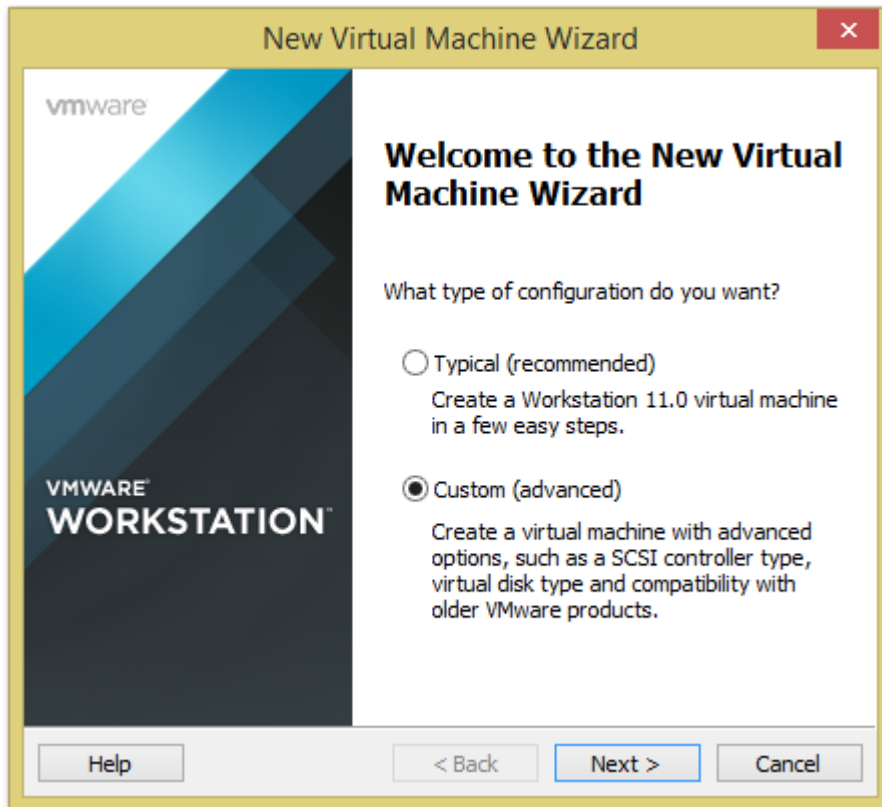
Windows Server 2016 Datacenter 64-bit (English) - Microsoft Imagine

Gratis

Beschikbaar voor...

[Toevoegen aan winkelwagen](#)





New Virtual Machine Wizard

Guest Operating System Installation
A virtual machine is like a physical computer; it needs an operating system. How will you install the guest operating system?

Install from:

Installer disc:
No drives available

Installer disc image file (iso):
D:\Users\hw.hilgersom\Documents\Software per ISO\ Browse...

I will install the operating system later.
The virtual machine will be created with a blank hard disk.

Help < Back Next > Cancel

New Virtual Machine Wizard

Select a Guest Operating System
Which operating system will be installed on this virtual machine?

Guest operating system

Microsoft Windows
 Linux
 Novell NetWare
 Solaris
 VMware ESX
 Other

Version
Windows Server 2012

Help < Back Next > Cancel

New Virtual Machine Wizard

Name the Virtual Machine
What name would you like to use for this virtual machine?

Virtual machine name:

Location:

The default location can be changed at Edit > Preferences.

< Back Next > Cancel

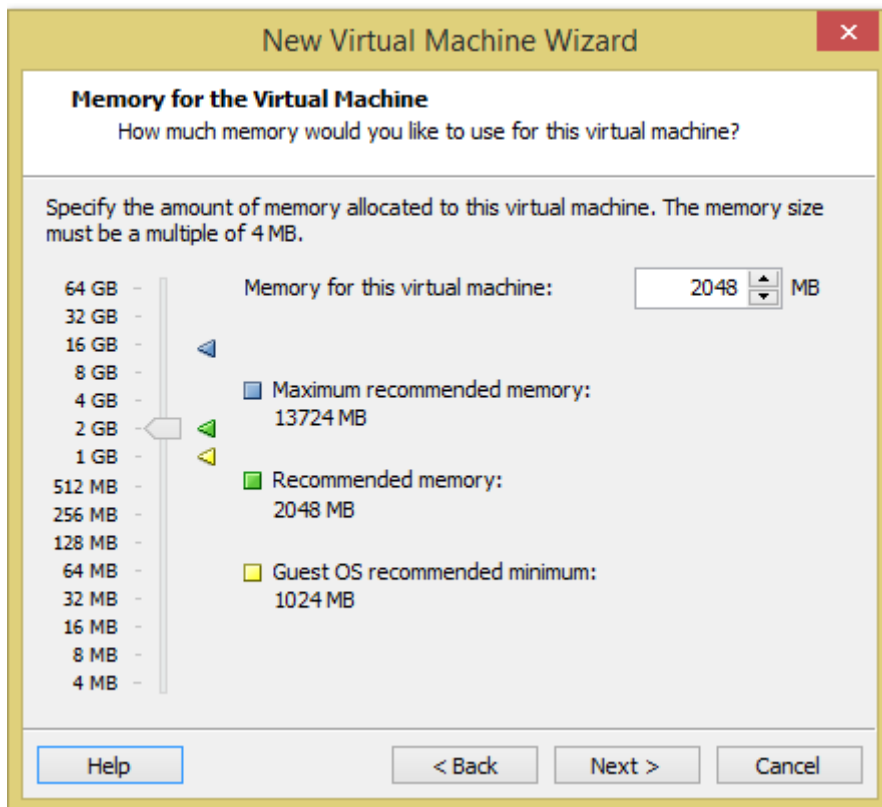
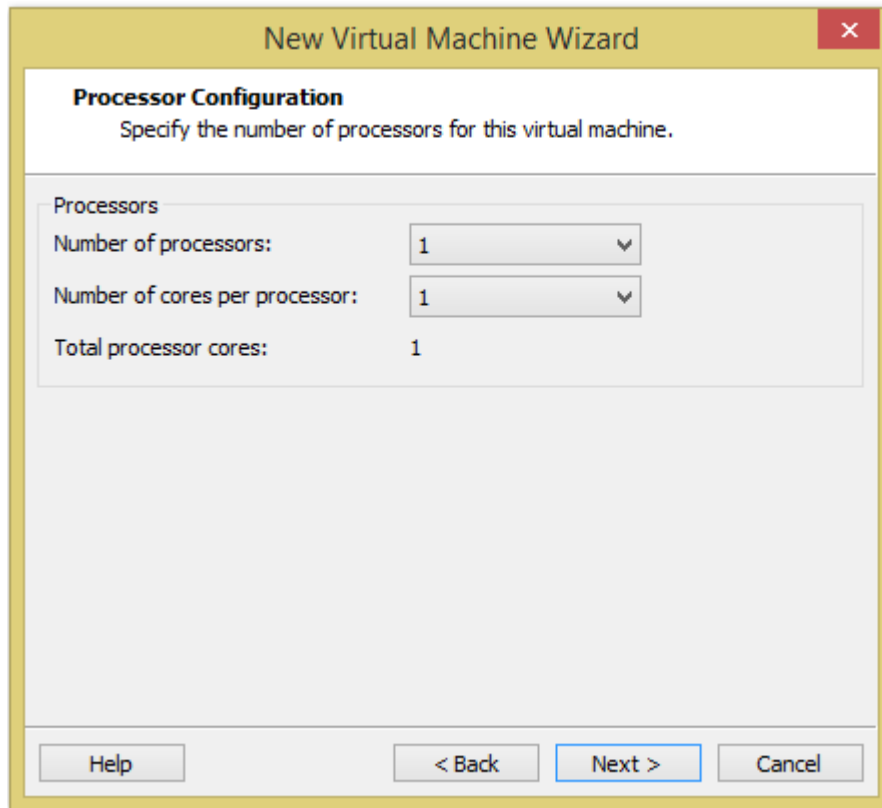
New Virtual Machine Wizard

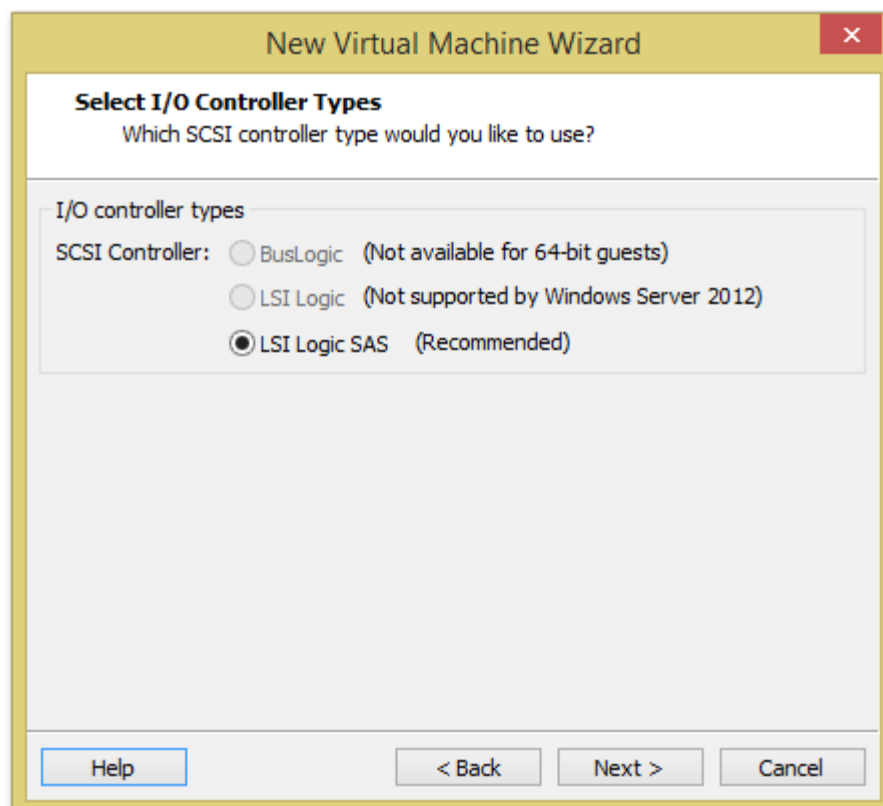
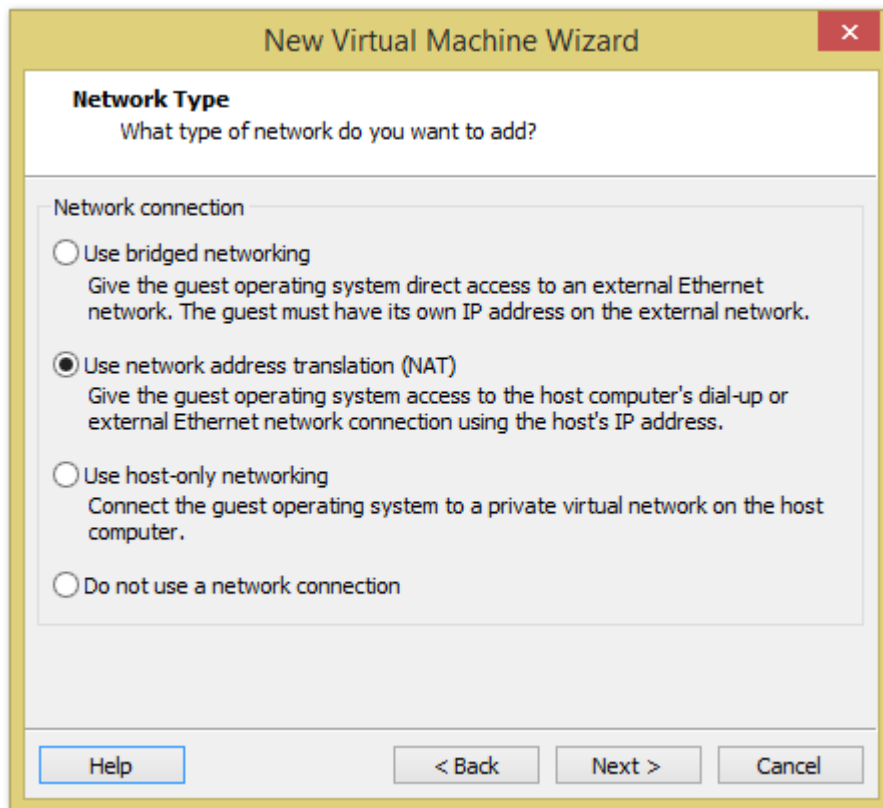
Firmware Type
What kind of boot device should this virtual machine have?

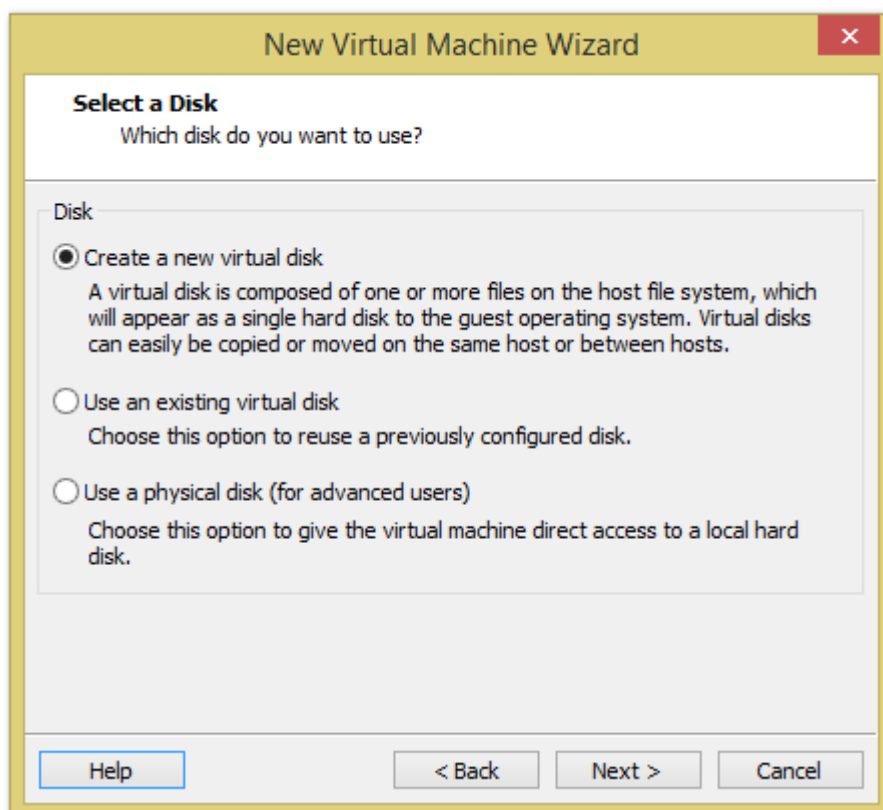
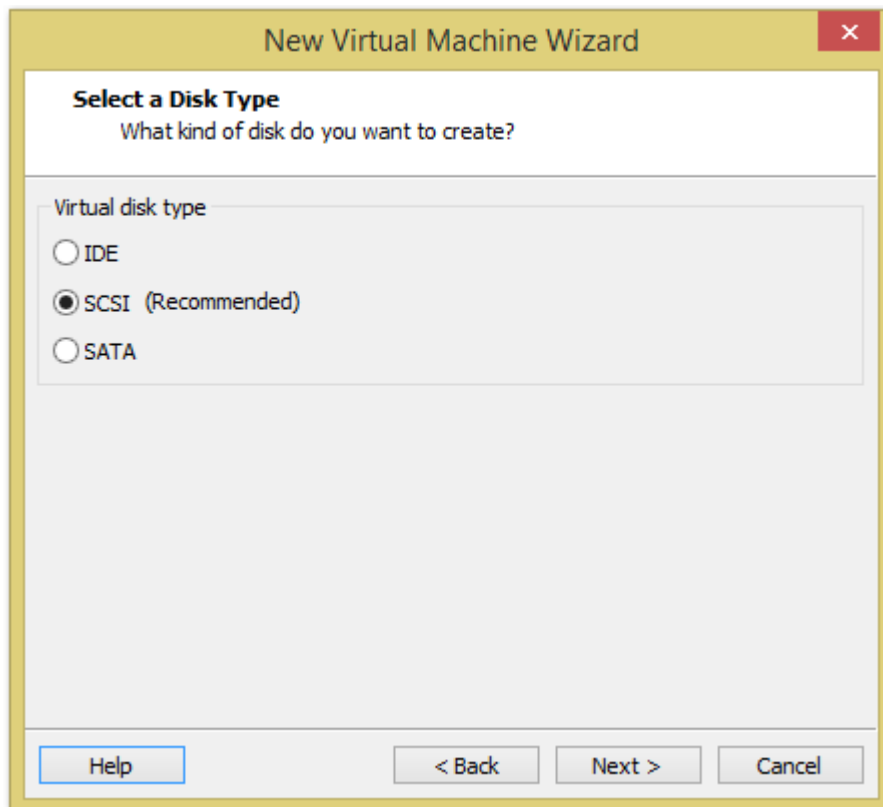
Firmware type

BIOS
 EFI

< Back Next > Cancel







New Virtual Machine Wizard

Specify Disk Capacity

How large do you want this disk to be?

Maximum disk size (GB):

Recommended size for Windows Server 2012: 60 GB

Allocate all disk space now.

Allocating the full capacity can enhance performance but requires all of the physical disk space to be available right now. If you do not allocate all the space now, the virtual disk starts small and grows as you add data to it.

Store virtual disk as a single file

Split virtual disk into multiple files

Splitting the disk makes it easier to move the virtual machine to another computer but may reduce performance with very large disks.

New Virtual Machine Wizard

Specify Disk File

Where would you like to store the disk file?

Disk File

One disk file will be created for each 2 GB of virtual disk capacity. File names for each file beyond the first will be automatically generated using the file name provided here as a basis.

New Virtual Machine Wizard



Ready to Create Virtual Machine

Click Finish to create the virtual machine. Then you can install Windows Server 2012.

The virtual machine will be created with the following settings:

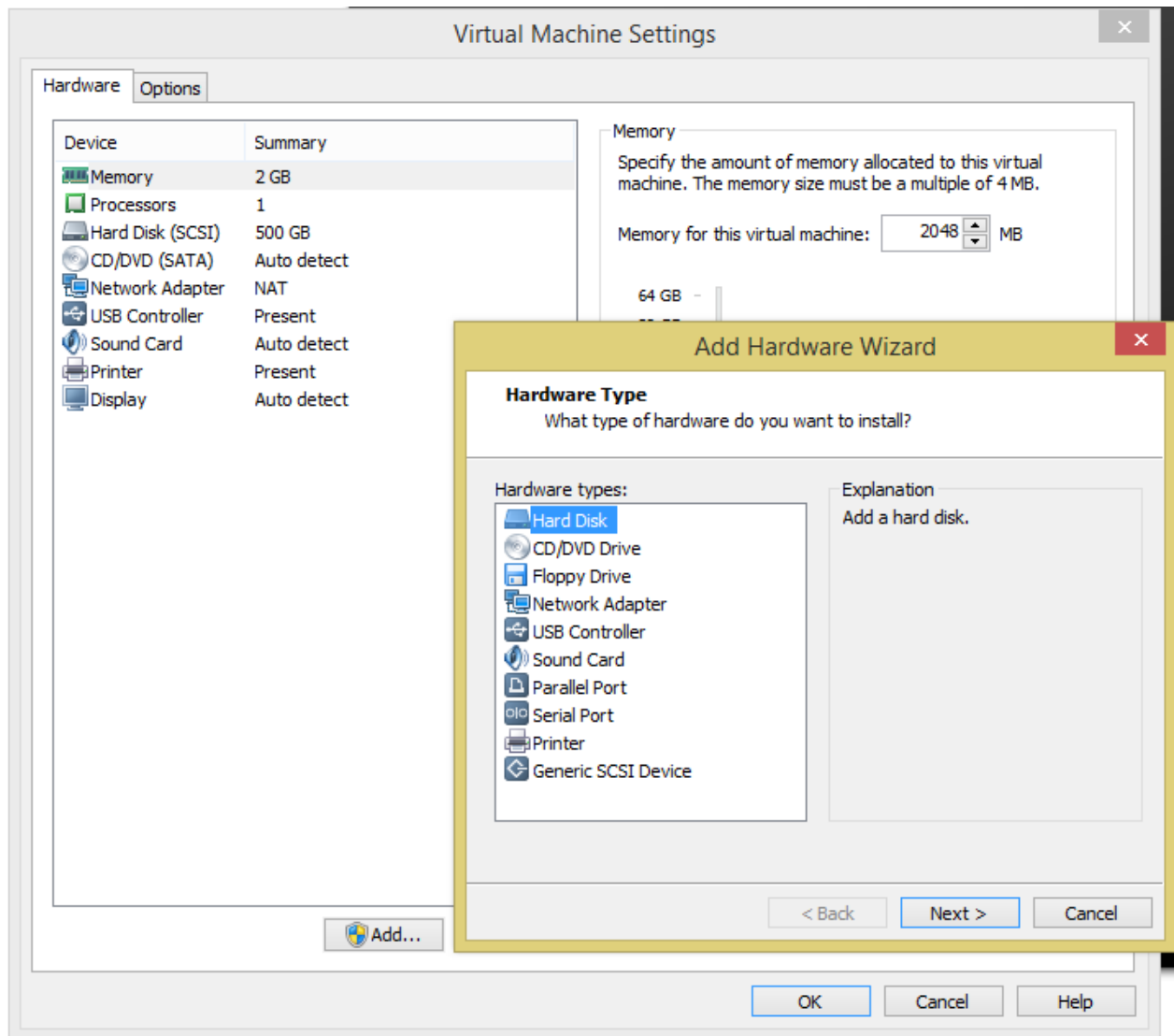
Name:	PFSV16	▲
Location:	D:\Users\hw.hilgersom\Documents\Virtual Machines\...	
Version:	Workstation 11.0	
Operating System:	Windows Server 2012	
Hard Disk:	500 GB, Split	
Memory:	2048 MB	
Network Adapter:	NAT	
Other Devices:	CD/DVD, USB Controller, Printer, Sound Card	▼

Customize Hardware...

< Back

Finish

Cancel



Add Hardware Wizard ✕

Select a Disk Type
What kind of disk do you want to create?

Virtual disk type

IDE

SCSI (Recommended)

SATA

Mode

Independent
Independent disks are not affected by snapshots.

Persistent
Changes are immediately and permanently written to the disk.

Nonpersistent
Changes to the disk are discarded when you power off or restore a snapshot.

Add Hardware Wizard ✕

Select a Disk
Which disk do you want to use?

Disk

Create a new virtual disk
A virtual disk is composed of one or more files on the host file system, which will appear as a single hard disk to the guest operating system. Virtual disks can easily be copied or moved on the same host or between hosts.

Use an existing virtual disk
Choose this option to reuse a previously configured disk.

Use a physical disk (for advanced users)
Choose this option to give the virtual machine direct access to a local hard disk.

Add Hardware Wizard [X]

Specify Disk Capacity
How large do you want this disk to be?

Maximum disk size (GB):

Recommended size for Windows Server 2012: 60 GB

Allocate all disk space now.

Allocating the full capacity can enhance performance but requires all of the physical disk space to be available right now. If you do not allocate all the space now, the virtual disk starts small and grows as you add data to it.

Store virtual disk as a single file

Split virtual disk into multiple files

Splitting the disk makes it easier to move the virtual machine to another computer but may reduce performance with very large disks.

< Back Next > Cancel

Add Hardware Wizard [X]

Specify Disk File
Where would you like to store the disk file?

Disk file

One disk file will be created for each 2 GB of virtual disk capacity. File names for each file beyond the first will be automatically generated using the file name provided here as a basis.

File name: Browse...

< Back Finish Cancel

Virtual Machine Settings

Hardware Options

Device	Summary
Memory	2 GB
Processors	1
Hard Disk (SCSI)	500 GB
New Hard Disk (...)	500 GB
CD/DVD (SATA)	Auto detect
Network Adapter	NAT
USB Controller	Present
Sound Card	Auto detect
Printer	Present
Display	Auto detect

Device status

- Connected
- Connect at power on

Network connection

- Bridged: Connected directly to the physical network
 - Replicate physical network connection state
- NAT: Used to share the host's IP address
- Host-only: A private network shared with the host
- Custom: Specific virtual network

VMnet0

- LAN segment:

LAN Segments...

Advanced...

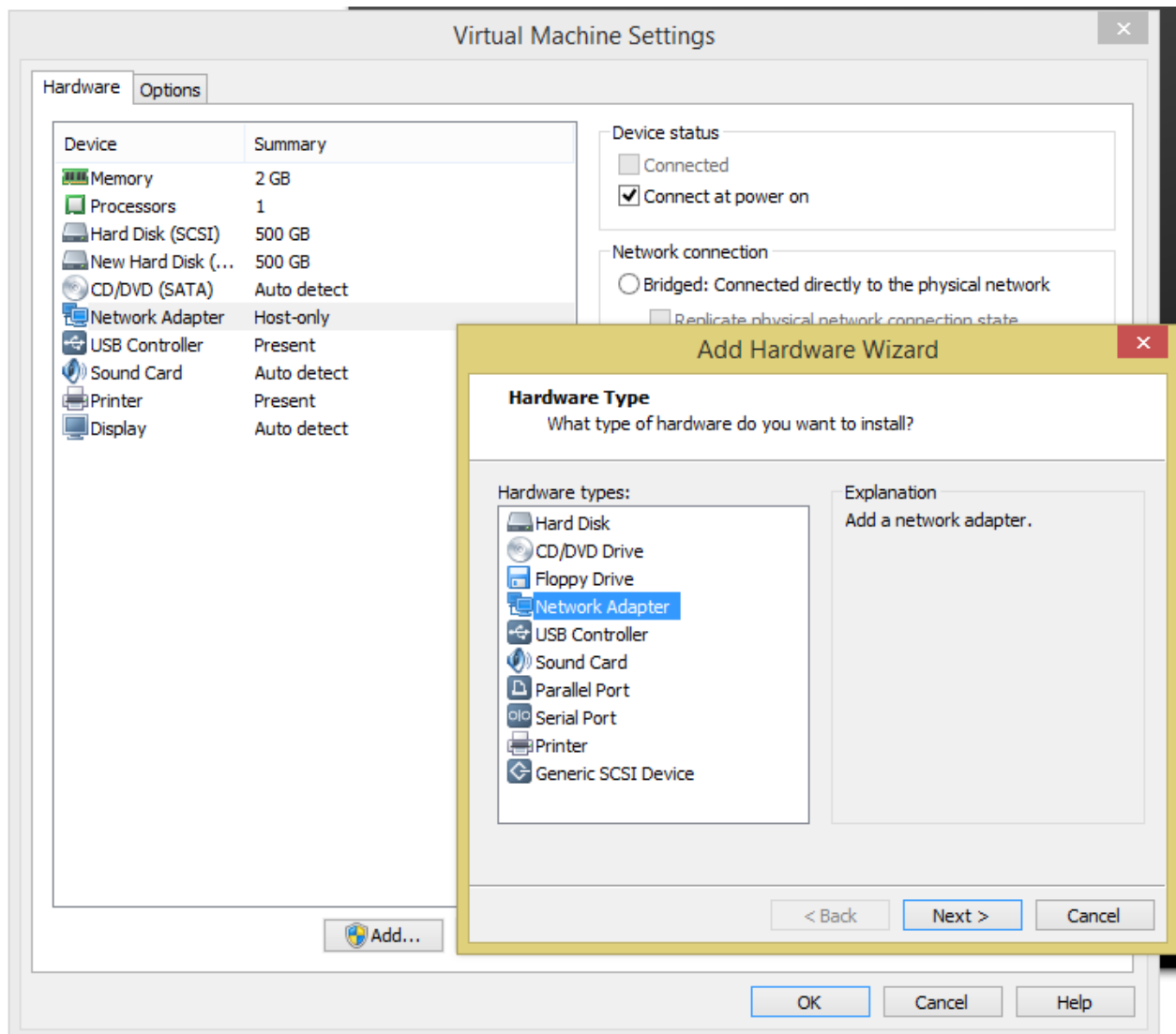
Add...

Remove

OK

Cancel

Help



Add Hardware Wizard



Network Adapter Type

What type of network adapter do you want to add?

Network connection

- Bridged: Connected directly to the physical network
 - Replicate physical network connection state
- NAT: Used to share the host's IP address
- Host-only: A private network shared with the host
- Custom: Specific virtual network

VMnet0

Device status

- Connect at power on

< Back

Finish

Cancel

Virtual Machine Settings

Hardware Options

Device	Summary
Memory	2 GB
Processors	1
Hard Disk (SCSI)	500 GB
New Hard Disk (...)	500 GB
CD/DVD (SATA)	Auto detect
Network Adapter	Host-only
Network Adapter 2	NAT
USB Controller	Present
Sound Card	Auto detect
Printer	Present
Display	Auto detect

Device status

Connected

Connect at power on

Network connection

Bridged: Connected directly to the physical network

Replicate physical network connection state

NAT: Used to share the host's IP address

Host-only: A private network shared with the host

Custom: Specific virtual network

VMnet0

LAN segment:

LAN Segments... Advanced...

Add... Remove

OK Cancel Help

Virtual Machine Settings

Hardware Options

Device	Summary
Memory	2 GB
Processors	1
Hard Disk (SCSI)	500 GB
Hard Disk 2 (SCSI)	500 GB
CD/DVD (SATA)	Auto detect
Network Adapter	Host-only
Network Adapter 2	NAT
USB Controller	Present
Sound Card	Auto detect
Printer	Present
Display	Auto detect

Device status

Connected

Connect at power on

Connection

Use physical drive:

Auto detect

Use ISO image file:

D:\Users\hw.hilgersom\Documents

Browse...

Advanced...

Add... Remove

OK Cancel Help

Windows Server 2016

Language to install:

Time and currency format:

Keyboard or input method:

Enter your language and other preferences and click "Next" to continue.

Next

Windows Setup



Windows Server 2016

[Install now](#)

[Repair your computer](#)

© 2016 Microsoft Corporation. All rights reserved.



Activate Windows

If this is the first time you're installing Windows on this PC (or you're installing a different edition), you need to enter a valid Windows product key. Your product key should be in the confirmation email you received after buying a digital copy of Windows or on a label inside the box that Windows came in.

The product key looks like this: XXXXX-XXXXX-XXXXX-XXXXX-XXXXX

If you're reinstalling Windows, select I don't have a product key. Your copy of Windows will be automatically activated later.



[Privacy statement](#)

[I don't have a product key](#)

[Next](#)



Windows Setup



Select the operating system you want to install

Operating system	Architecture	Date modified
Windows Server 2016 Datacenter	x64	11/21/2016
Windows Server 2016 Datacenter (Desktop Experience)	x64	11/21/2016

Description:

This option is useful when a GUI is required—for example, to provide backward compatibility for an application that cannot be run on a Server Core installation. All server roles and features are supported. For more details see "Windows Server Installation Options."

Next



Windows Setup

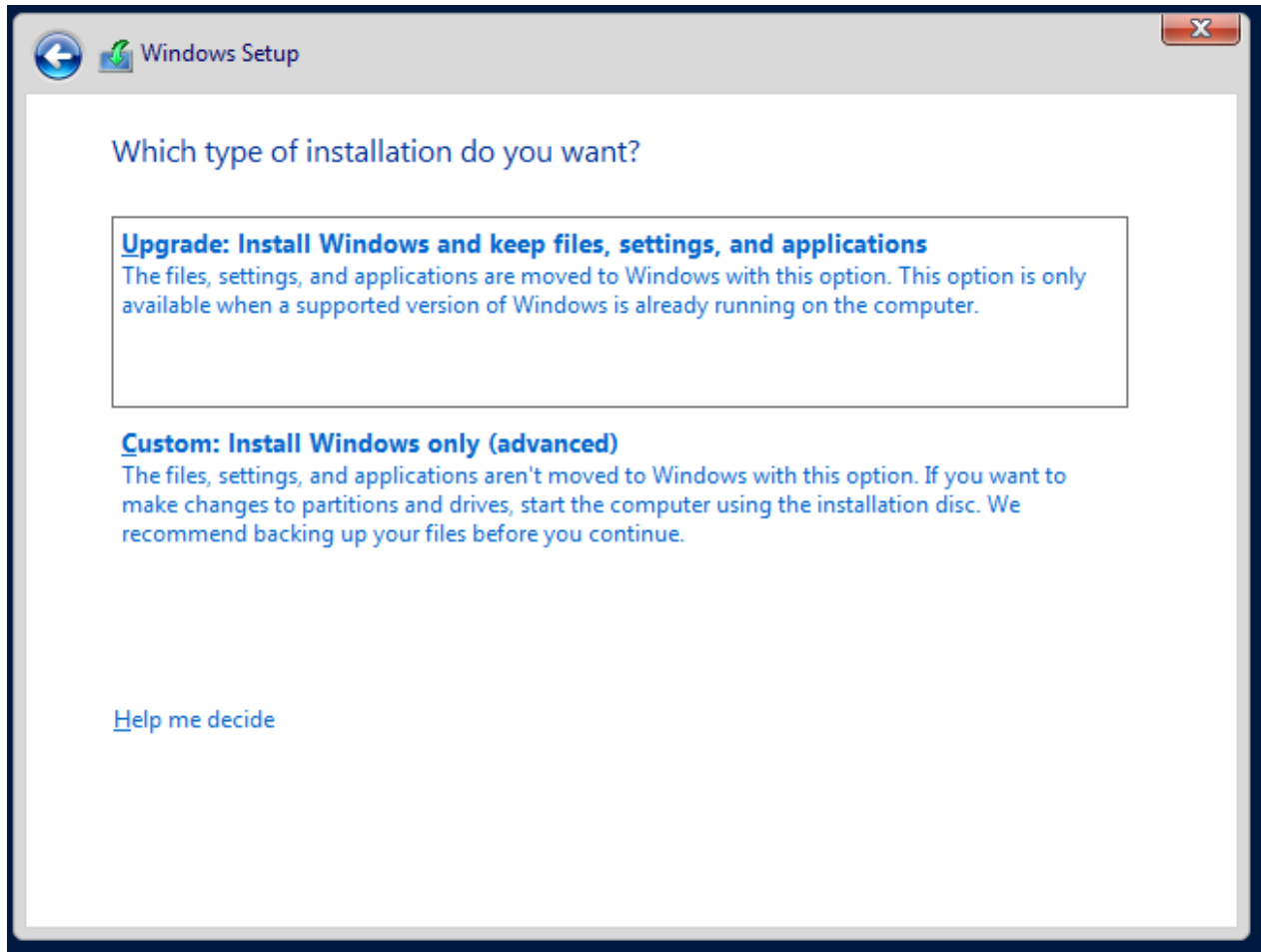


Applicable notices and license terms

IMPORTANT NOTICE (followed by LICENSE TERMS)

Diagnostic and Usage Information. Microsoft automatically collects this information over the internet, and uses it to help improve your installation, upgrade, and user experience, and the quality and security of Microsoft products and services. Consistent with these purposes, the information may be associated with your organization. Windows Server 2016 has four (4) information collection settings (Security, Basic, Enhanced, and Full), and uses the "**Enhanced**" setting by default. This level includes information required to: (i) run our antimalware and diagnostic and usage information technologies; (ii) understand device quality, and application usage and compatibility; and (iii) identify quality issues in the use and performance of the operating system and applications.

Next





Custom



Windows Setup



Where do you want to install Windows?

	Name	Total size	Free space	Type
	Drive 0 Unallocated Space	500.0 GB	500.0 GB	
	Drive 1 Unallocated Space	500.0 GB	500.0 GB	

 Refresh

 Delete

 Format

 New

 Load driver

 Extend

Next



Windows Setup



Where do you want to install Windows?

	Name	Total size	Free space	Type
	Drive 0 Unallocated Space	500.0 GB	500.0 GB	
	Drive 1 Unallocated Space	500.0 GB	500.0 GB	

Refresh

Delete

Format

New

Load driver

Extend


Size: MB



Windows Setup



Where do you want to install Windows?

Name	Total size	Free space	Type
 Drive 0 Unallocated Space	500.0 GB	500.0 GB	



Windows Setup



To ensure that all Windows features work correctly, Windows might create additional partitions for system files.

 Refresh

 Load

OK

Cancel





Next



Windows Setup




Where do you want to install Windows?

	Name	Total size	Free space	Type
	Drive 0 Partition 1: System Reserved	500.0 MB	483.0 MB	System
	Drive 0 Partition 2	97.2 GB	97.2 GB	Primary
	Drive 0 Unallocated Space	402.3 GB	402.3 GB	
	Drive 1 Unallocated Space	500.0 GB	500.0 GB	

 Refresh

 Delete

 Format

 New

 Load driver

 Extend

Next

Installing Windows

Status

Copying Windows files (0%)

Getting files ready for installation

Installing features

Installing updates

Finishing up

Customize settings

Type a password for the built-in administrator account that you can use to sign in to this computer.

User name

Administrator

Password


••••••••

Reenter password

••••••••



Finish

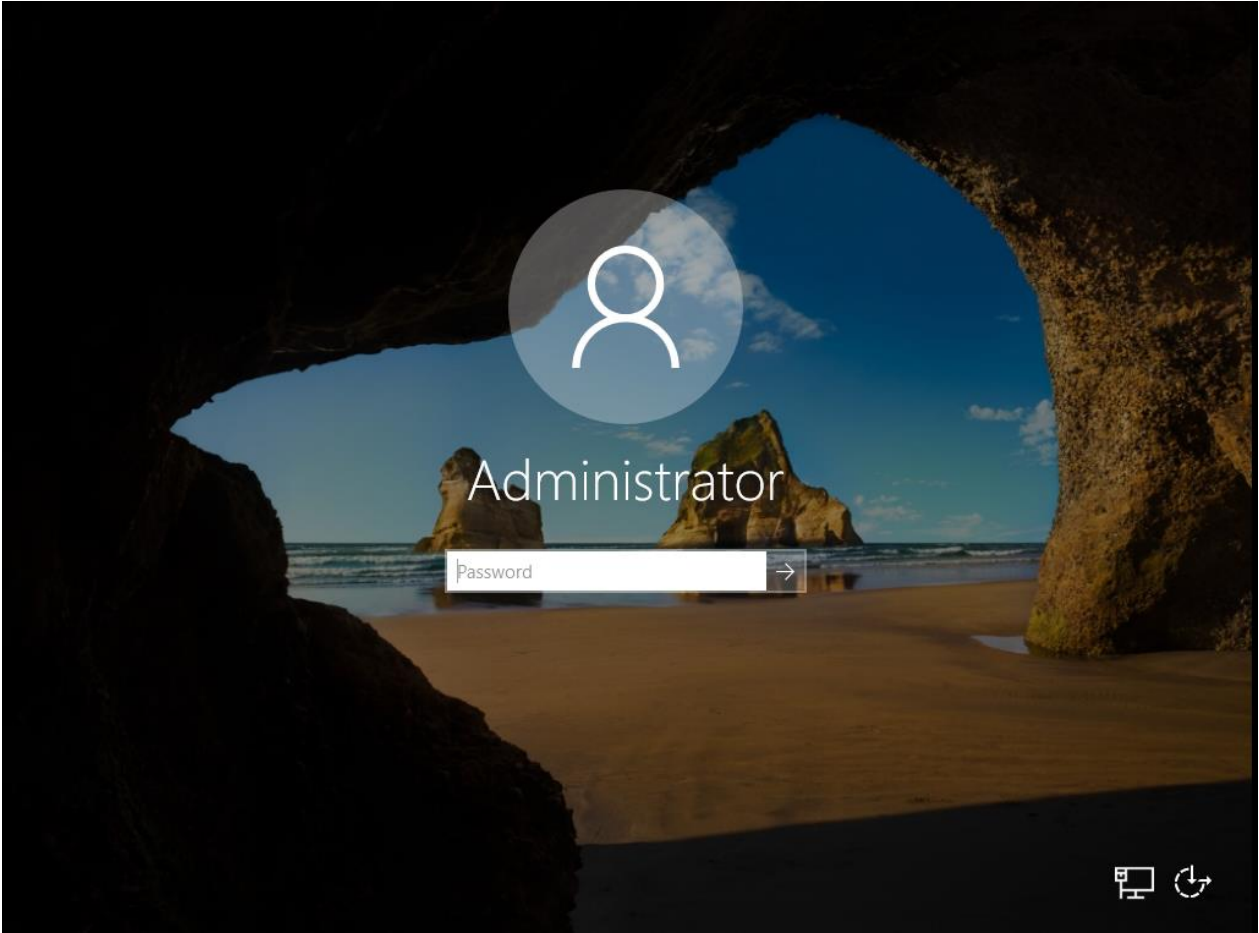


Press Ctrl+Alt+Delete to unlock

13:59

woensdag 30 augustus





Administrator

 →



Recycle Bin



Server Manager

Networks

Network

Do you want to allow your PC to be discoverable by other PCs and devices on this network?

We recommend allowing this on your home and work networks, but not public ones.

Yes

No



Server Manager

Server Manager Dashboard

Manage Tools View Help

Dashboard

- Local Server
- All Servers

WELCOME TO SERVER MANAGER

1 Configure this local server

- 2 Add roles and features
- 3 Add other servers to manage
- 4 Create a server group
- 5 Connect this server to cloud services

QUICK START

WHAT'S NEW

LEARN MORE

Hide

ROLES AND SERVER GROUPS

Roles: 0 | Server groups: 1 | Servers total: 1

Local Server	1	All Servers	1
Manageability		Manageability	
Events		Events	
Services		Services	
Performance		Performance	
BPA results		BPA results	

14:05 30-8-2017

